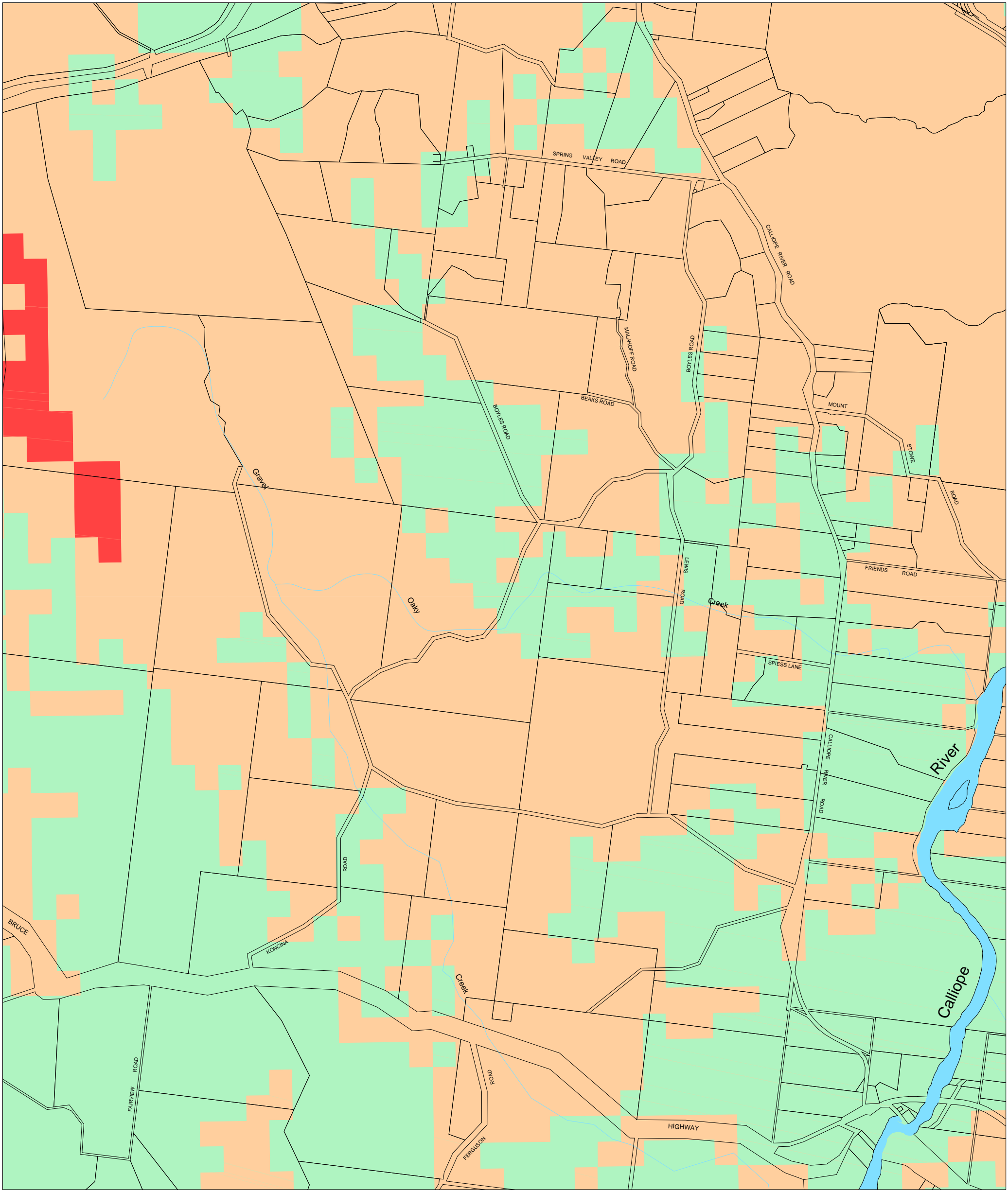




BUSHFIRE MANAGEMENT OVERLAY



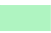



PRODUCED BY CALLIOPE SHIRE COUNCIL  
DEVELOPMENT SECTION.

Data Source:  
© Calliope Shire Council 2006. In consideration of Calliope Shire Council permitting use of this data you acknowledge and agree that Calliope Shire Council gives no warranty in relation to the data (including accuracy, reliability, completeness, currency or suitability) and accept no liability (including without limitation, liability in negligence) for any loss, damage or costs (including consequential damage) relating to any use of the data. Data must not be used for direct marketing or be used in breach of the privacy laws.

© The State of Queensland (Department of Natural Resources and Water) 2006.  
In consideration of the State permitting use of this data you acknowledge and agree that the State gives no warranty in relation to the data (including accuracy, reliability, completeness, currency or suitability) and accept no liability (including without limitation, liability in negligence) for any loss, damage or costs (including consequential damage) relating to any use of the data. Data must not be used for direct marketing or be used in breach of the privacy laws.

Bushfire Risk Analysis data was supplied by the Rural Fire Service division of Queensland Fire & Rescue Service. This data is to be used as a guide only for planning purposes. While every care is taken to ensure the accuracy of this data, the Department of Emergency Services makes no representations or warranties about its accuracy, reliability, completeness or suitability and disclaims all responsibility and liability.

LEGEND

- |   |                        |  |                           |
|---|------------------------|--|---------------------------|
|  | LOW BUSHFIRE HAZARD    |  | WATER (OCEAN/RIVER/CREEK) |
|  | MEDIUM BUSHFIRE HAZARD |  |                           |
|  | HIGH BUSHFIRE HAZARD   |  |                           |

