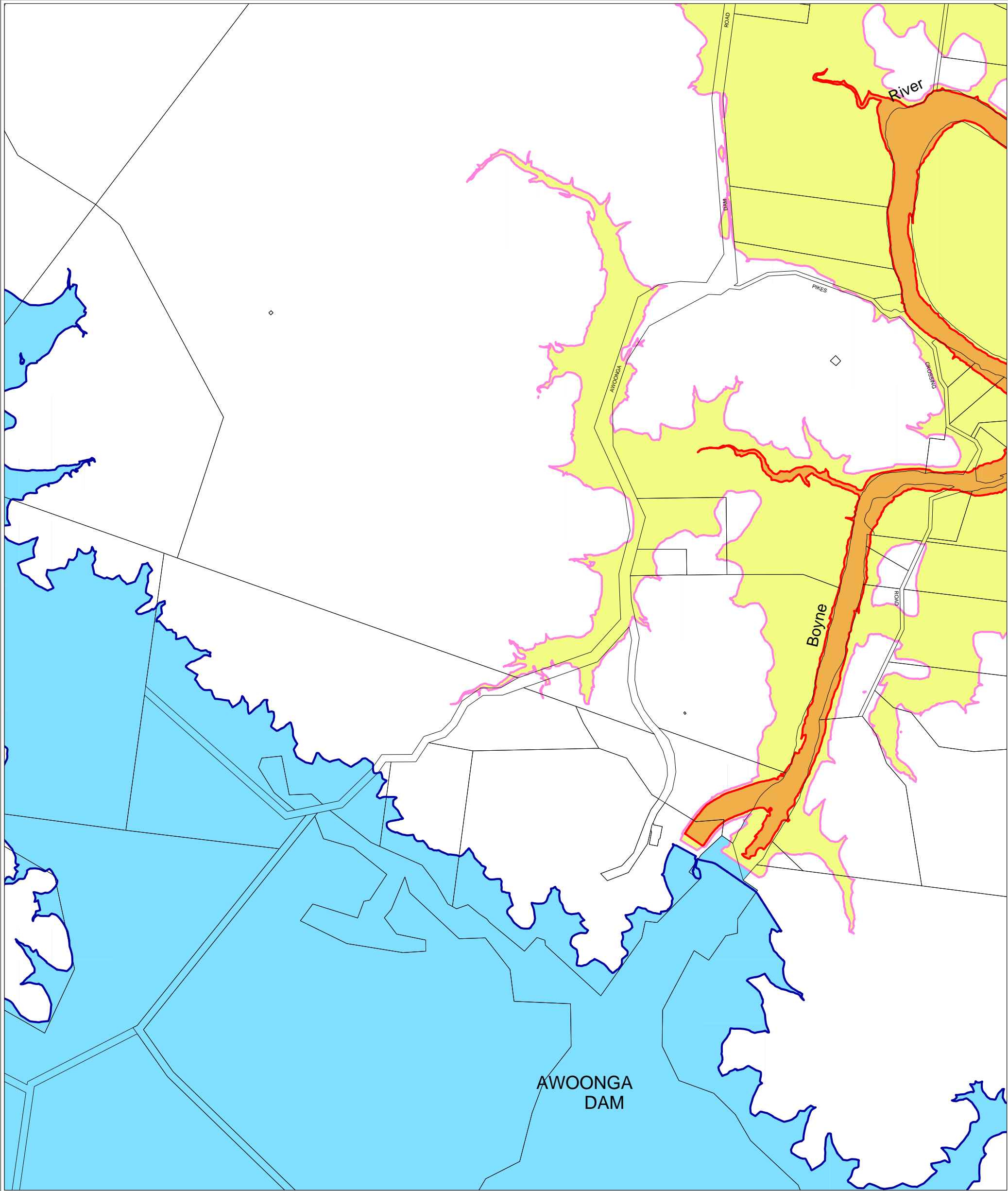




ACID SULFATE SOILS OVERLAY



PRODUCED BY CALLIOPE SHIRE COUNCIL
DEVELOPMENT SECTION.

Data Sources:
© Calliope Shire Council 2006. In consideration of Calliope Shire Council permitting use of this data you acknowledge and agree that Calliope Shire Council gives no warranty in relation to the data (including accuracy, reliability, completeness, currency or suitability) and accept no liability (including without limitation, liability in negligence) for any loss, damage or costs (including consequential damage) relating to any use of the data. Data must not be used for direct marketing or be used in breach of the privacy laws.

© The State of Queensland (Department of Natural Resources and Water) 2006. In consideration of the State and permitting use of this data you acknowledge and agree that the State gives no warranty in relation to the data (including accuracy, reliability, completeness, currency or suitability) and accept no liability (including without limitation, liability in negligence) for any loss, damage or costs (including consequential damage) relating to any use of the data. Data must not be used for direct marketing or be used in breach of the privacy laws.

Acid Sulphate Soil Information data provided by Calliope Shire Council.
(Current as at October 2004).

LEGEND

AREA LOCATED BETWEEN 0m AHD & 5m AHD	AREA LOCATED BETWEEN 5m AHD & 20m AHD	WATER (OCEAN/RIVER/CREEK)
5M CONTOUR	20M CONTOUR	AWOONGA DAM FULL SUPPLY LEVEL RL 40m AHD - SUPPLIED BY GAWB

Scale: 1:20,000